

A background image showing four people jumping joyfully on a sandy beach at sunset. The sun is low on the horizon, creating a warm, golden glow. The people are silhouetted against the bright sky, with their arms raised in the air. The ocean is visible in the distance.

NEW PRODUCT

XVR8808/16S

The most influential product of the year

© December 2016 Dahua Technology



Overview

UNION

OUR HEROES TEAM



4MP



PENTA-BRID



N8 PLATFORM



LOOP

Product Name Rule



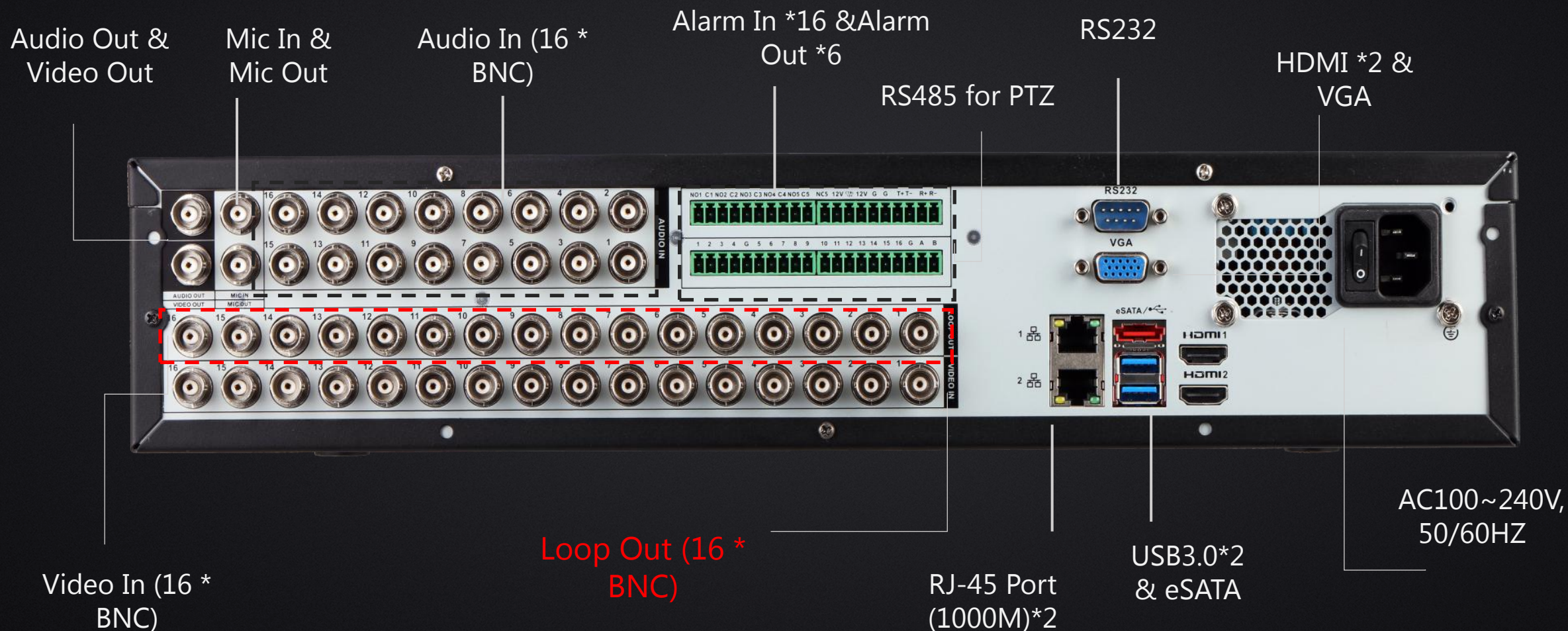
New Product Introduction



- 4M non-realtime-recording & 1080P real-time recording
- Support HDCVI/AHD/CVBS/TVI/IP video inputs
- H.264+/H.264 dual-stream video compression
- Max 64 channels IP camera inputs, each channel up to 12MP
- Max 256Mbps Incoming Bandwidth, 384Mbps Forwarding Bandwidth
- Support Loop Out



Interface Introduction



Comparison

Model	XVR88xxS	HCVR88xxs-S3
Video Standard	CVBS/HDCVI(4MP)/AHD(4MP)/HDTVI(2MP)	CVBS/HDCVI(200W)/AHD(2MP)
4MP encode	Yes	No
Loop Out	Yes	No
HDMI2 Spot Output	Yes	Yes
USB3.0	Yes	Yes
4K Output	Yes	Yes
H.265 Decode	Yes	Yes
HDCVI 4MP Fisheye	Yes	No
Fisheye dewarp	Yes	Yes
Smart Tracking	Yes	Yes
People Counting	Yes	Yes
Face Detection	Yes	Yes

Loop Output



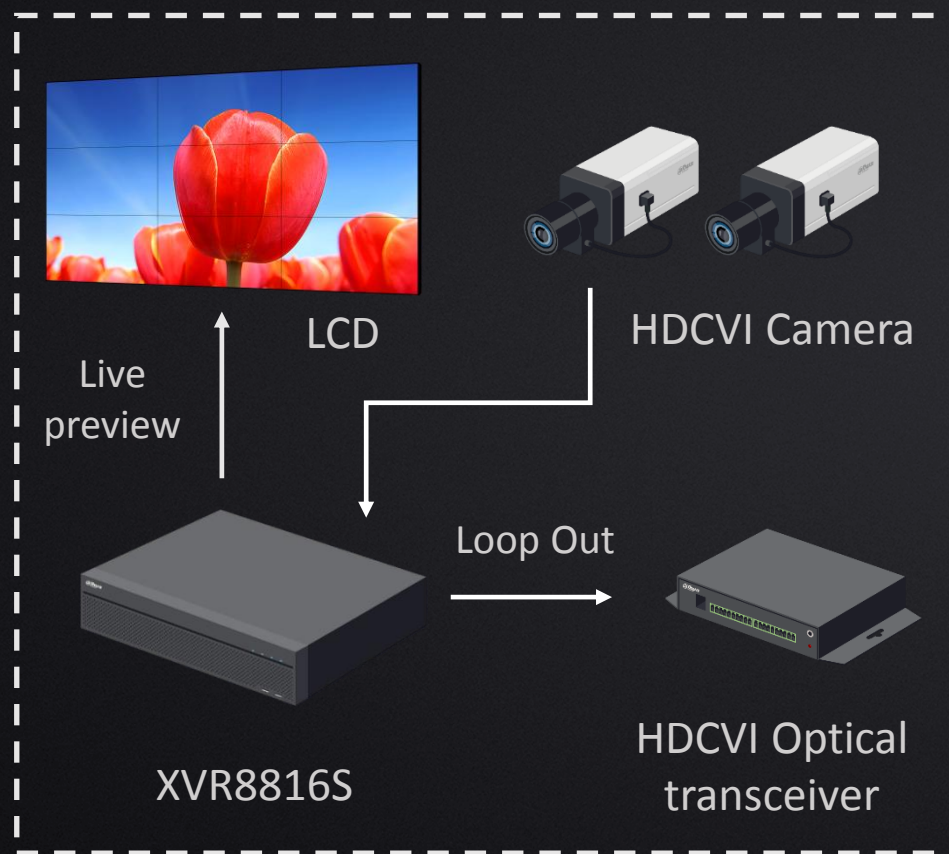
Without Video Distributor

It can get another video signal which is same as the camera transmission

Loop Solution

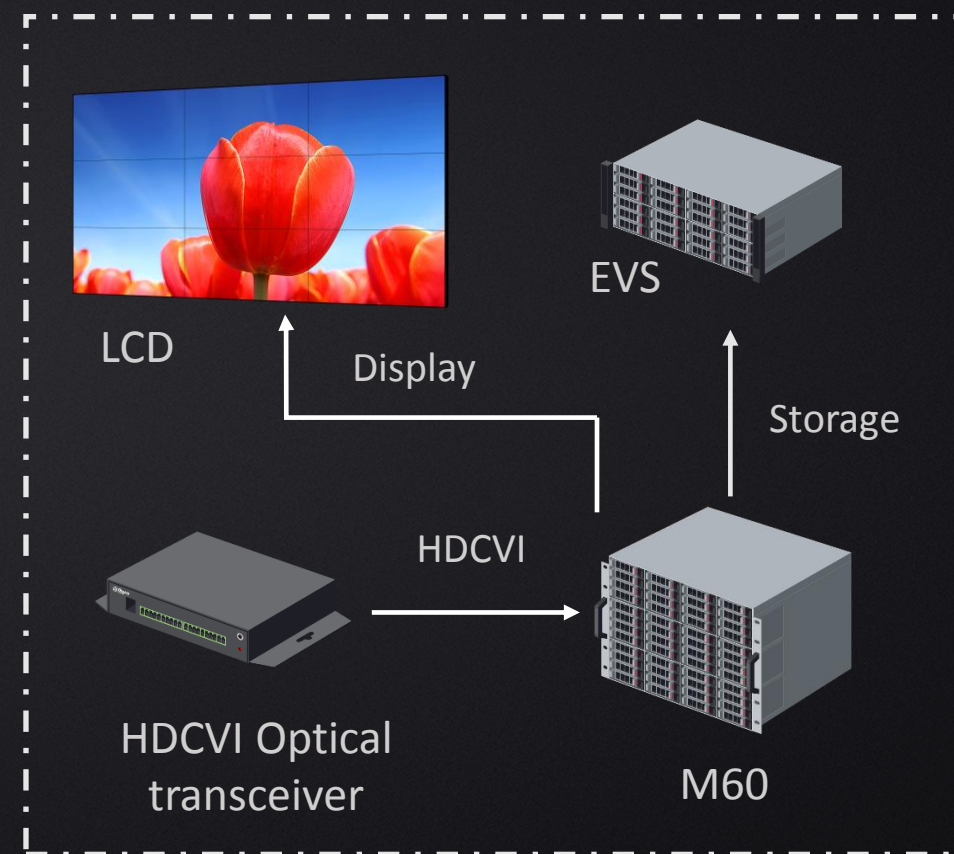
Less expenses &

more simple system !



Monitoring Point

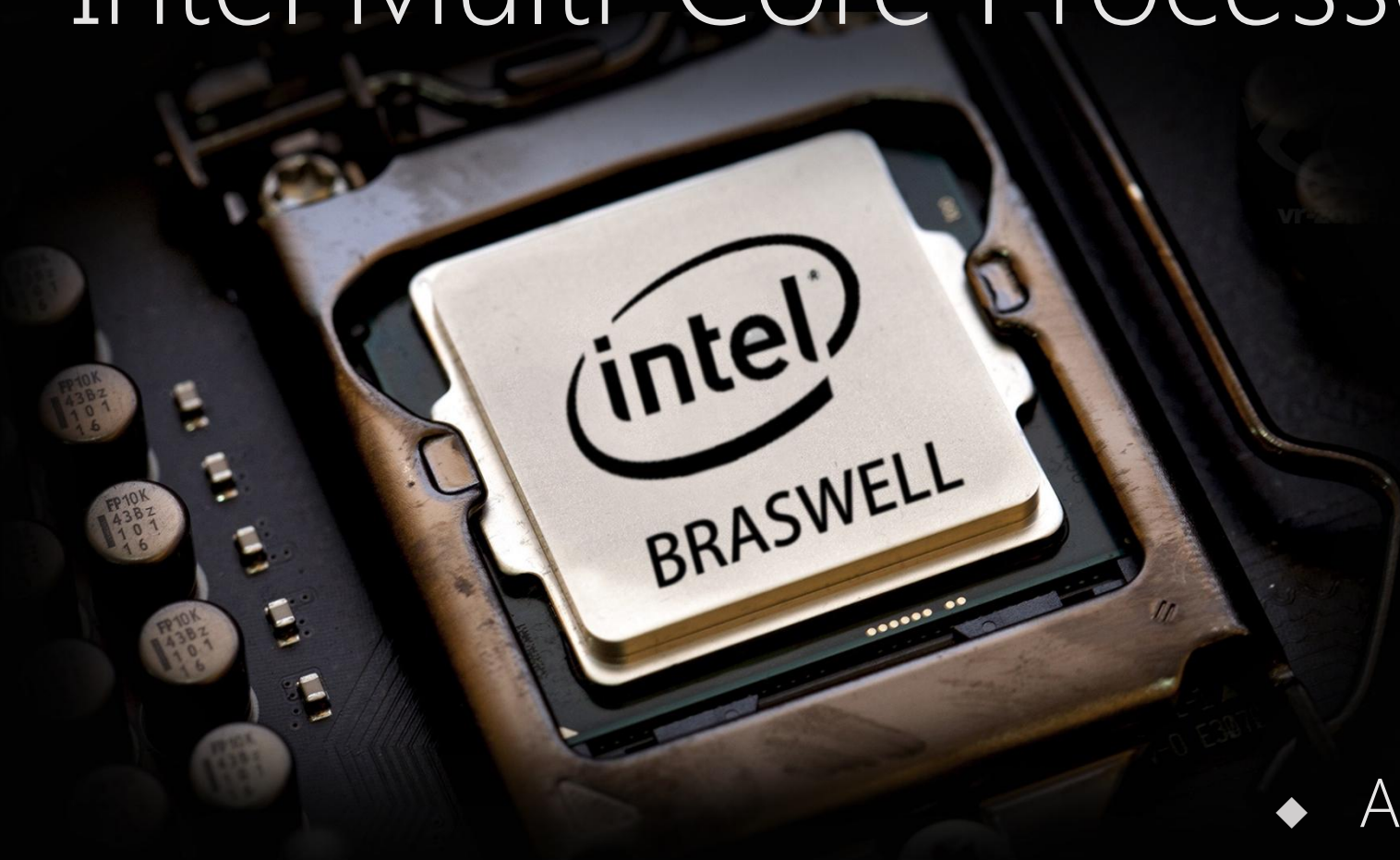
20KM
----->
----->



Monitoring center

Highlights

Intel Multi-Core Processor



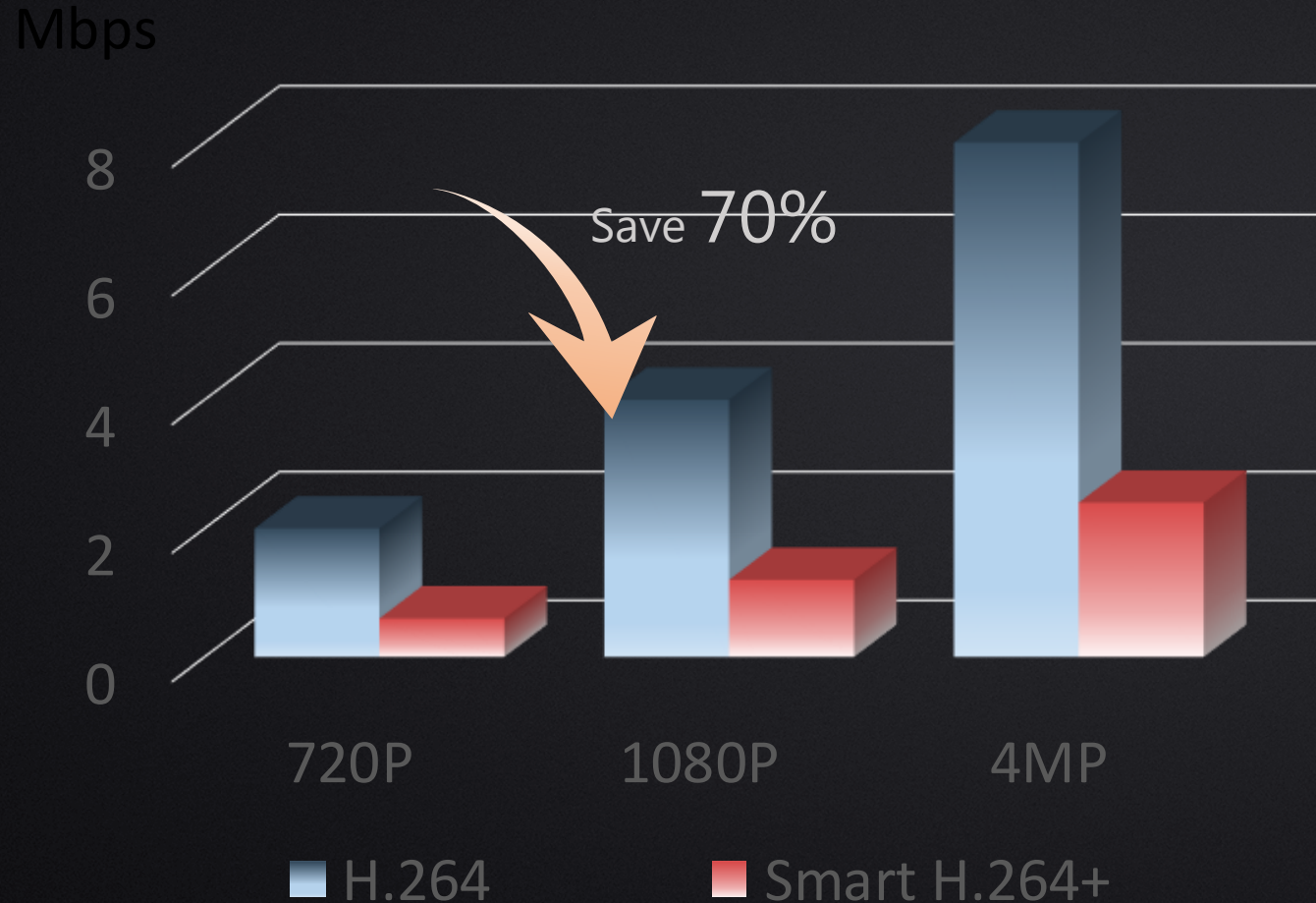
- ◆ Advanced CPU core technology
- ◆ More powerful & stable
- ◆ Faster processing speed

Higher Resolution of 4 Mega-pixel

Ultra HD 4MP with rich details can make more accurate color rendition



Smart H.264+ Codec



Smart H.264+ Codec is applied to save up bandwidth and storage

between 11.6% and 85.8%

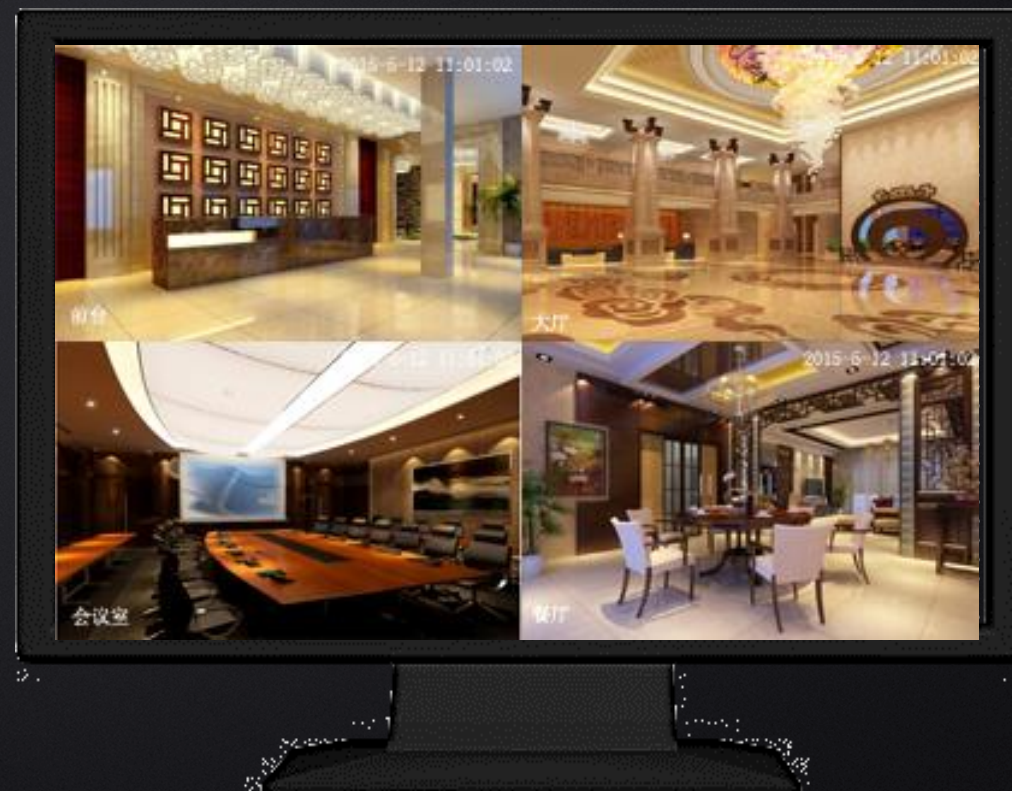
H.265 decode by GPU



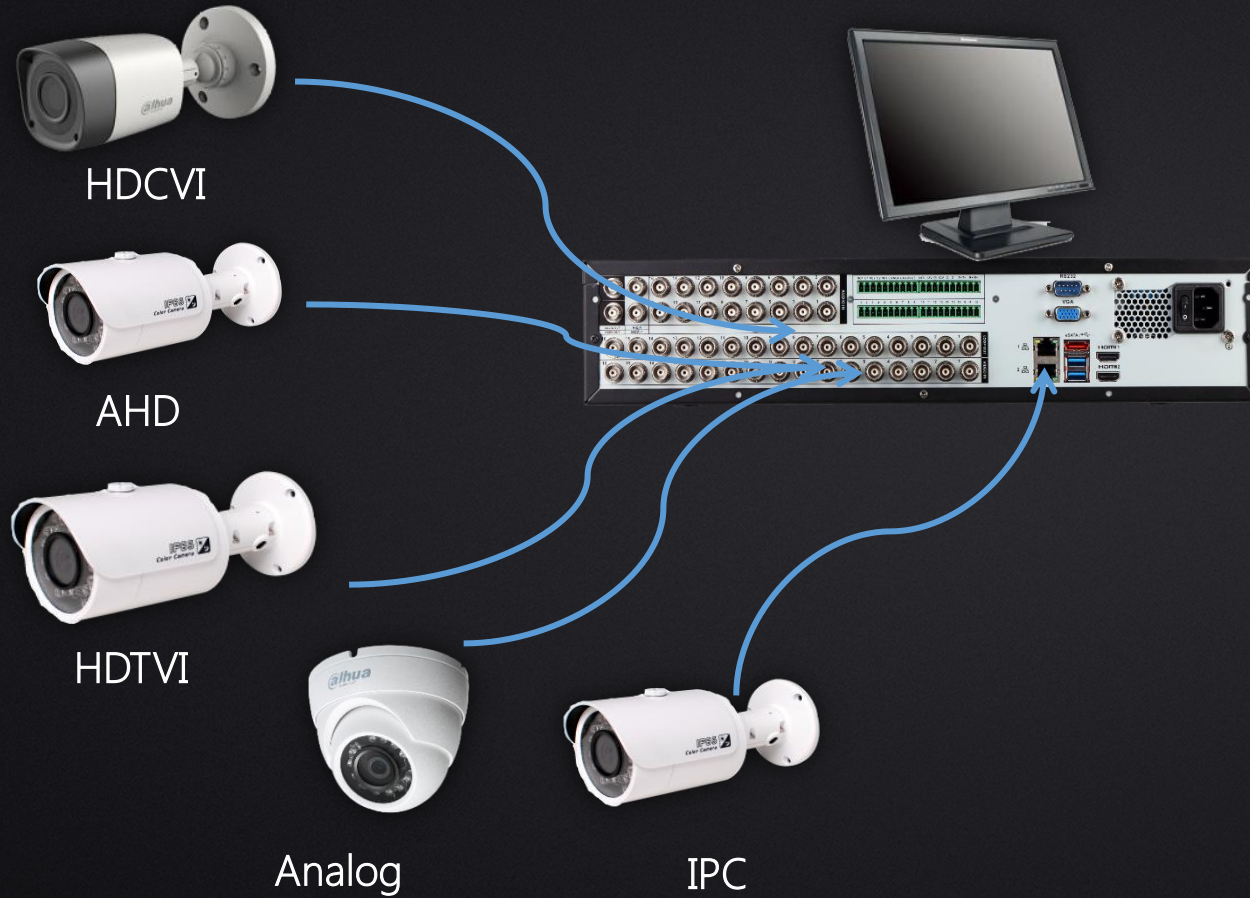
Docking 4K, restore the perfect picture quality

Spot Output

Support HDMI1,HDMI2,VGA Output;HDMI1,VGA same source,HDMI2 another source. HDMI1 4K output,HDMI2 1080P output



Penta-brid

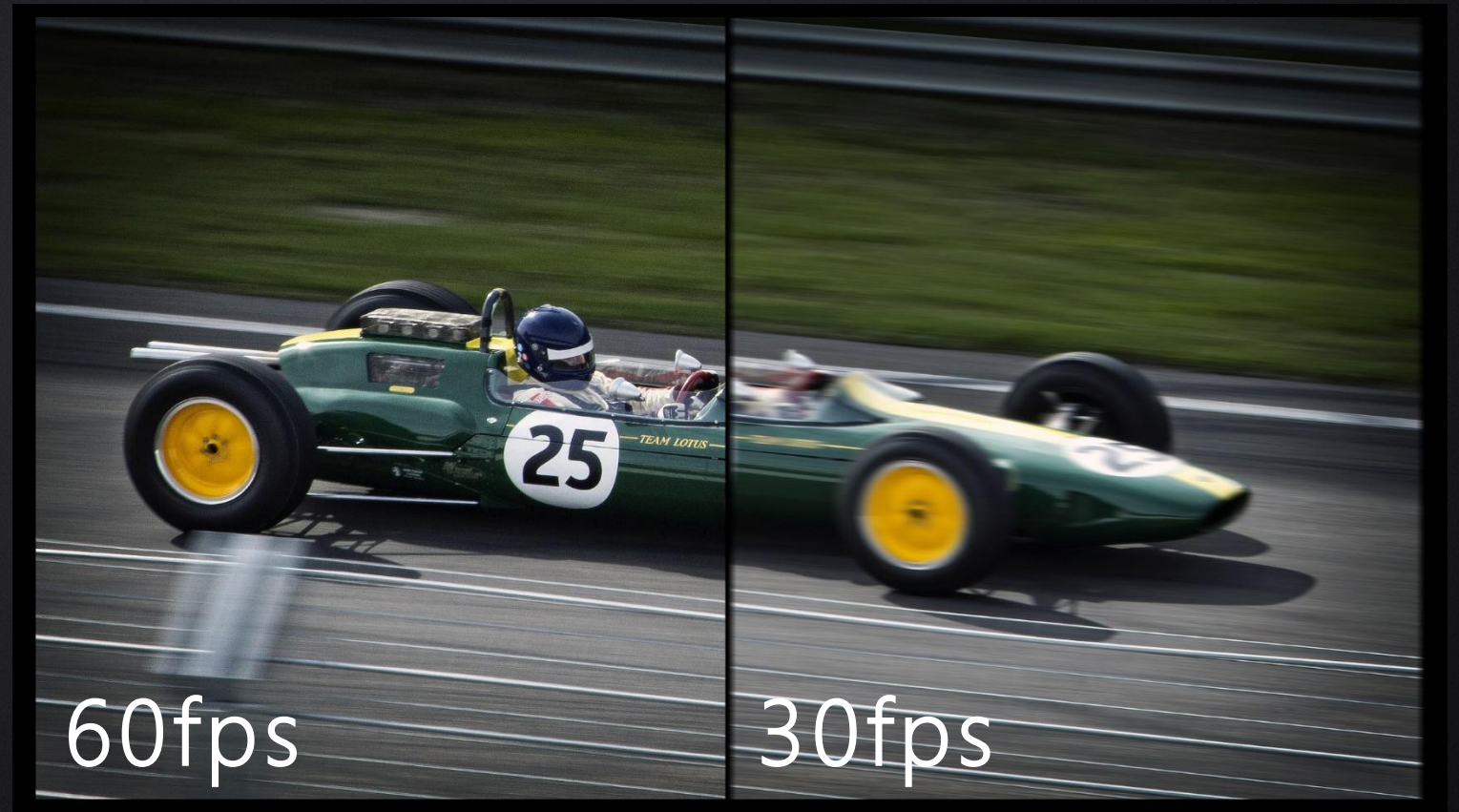


HDCVI/TVI/AHD/IP/CVBS

All in one

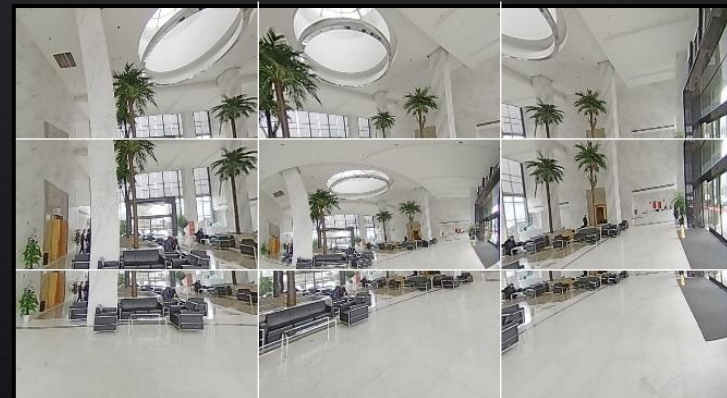
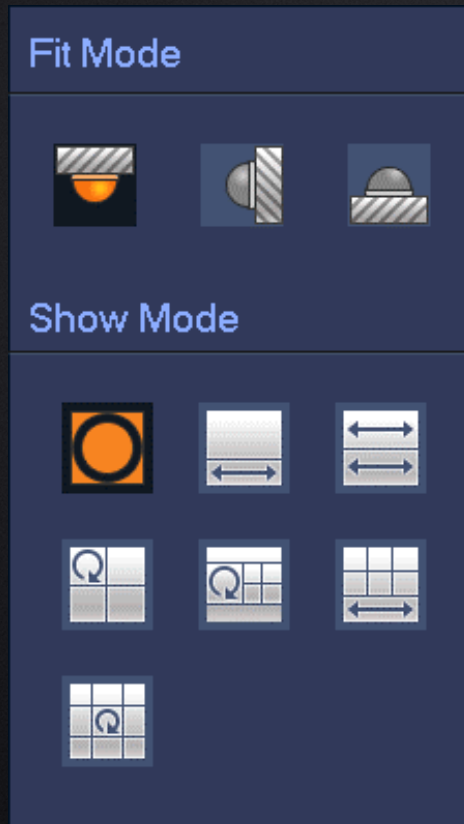
Fisheye Dewarpping

Supports 720P@50/60fps encode,
higher frame rate, help to see fast
moving objects



Fisheye Dewarpping

Supports dewarpping for panoramic fisheye cameras
and provides multi-window display.



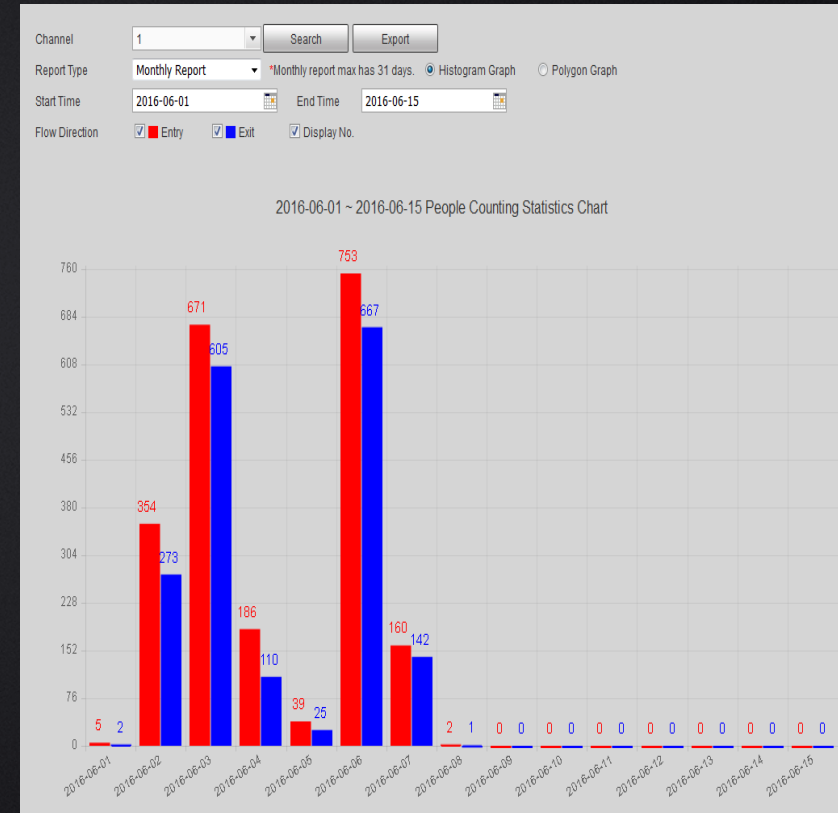
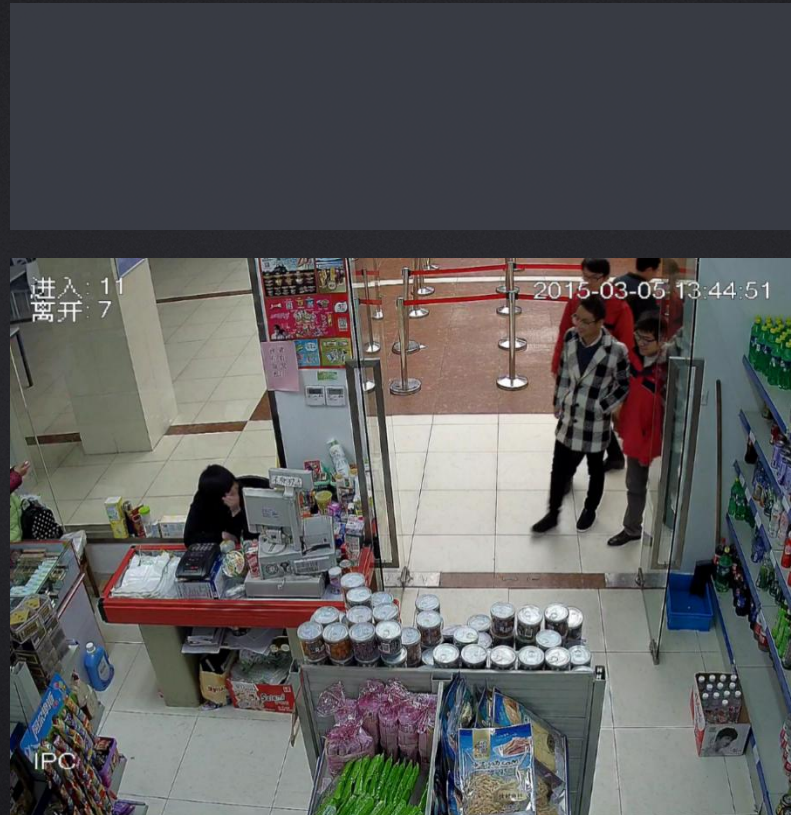
Smart Tracking

Smart tracking allows the PTZ dome to automatically follow target, which is set by user in the image of the bullet camera.

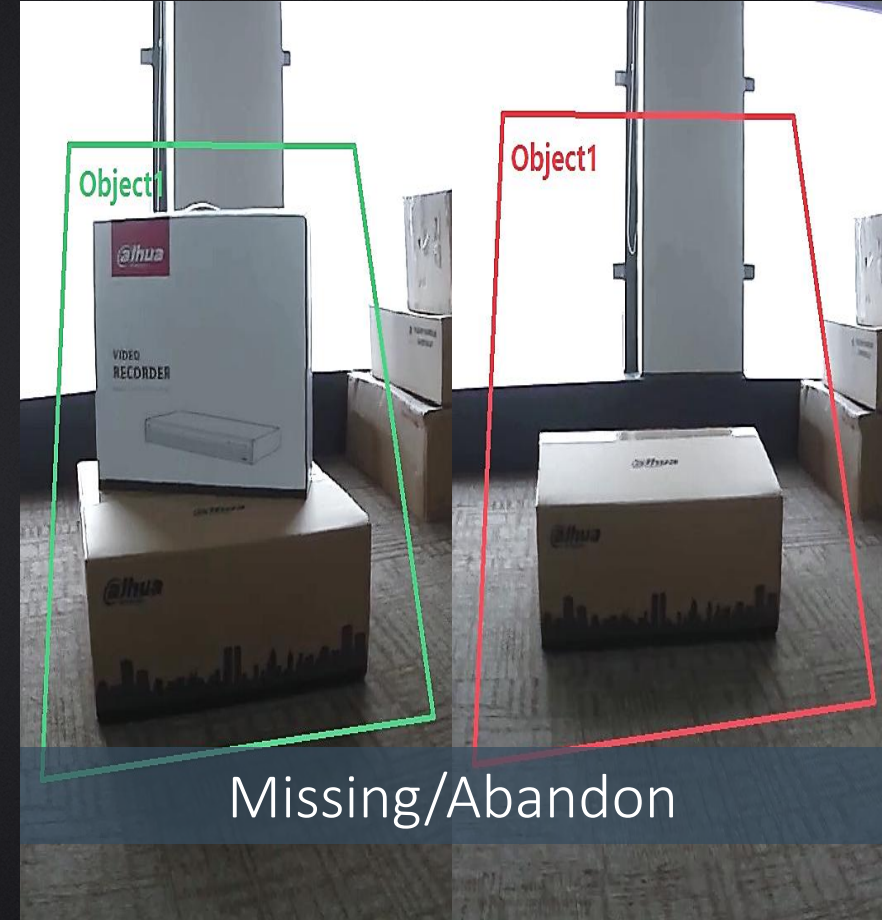


People Counting

People counting can show the
people flow in the entrance, and
export the daily/month report

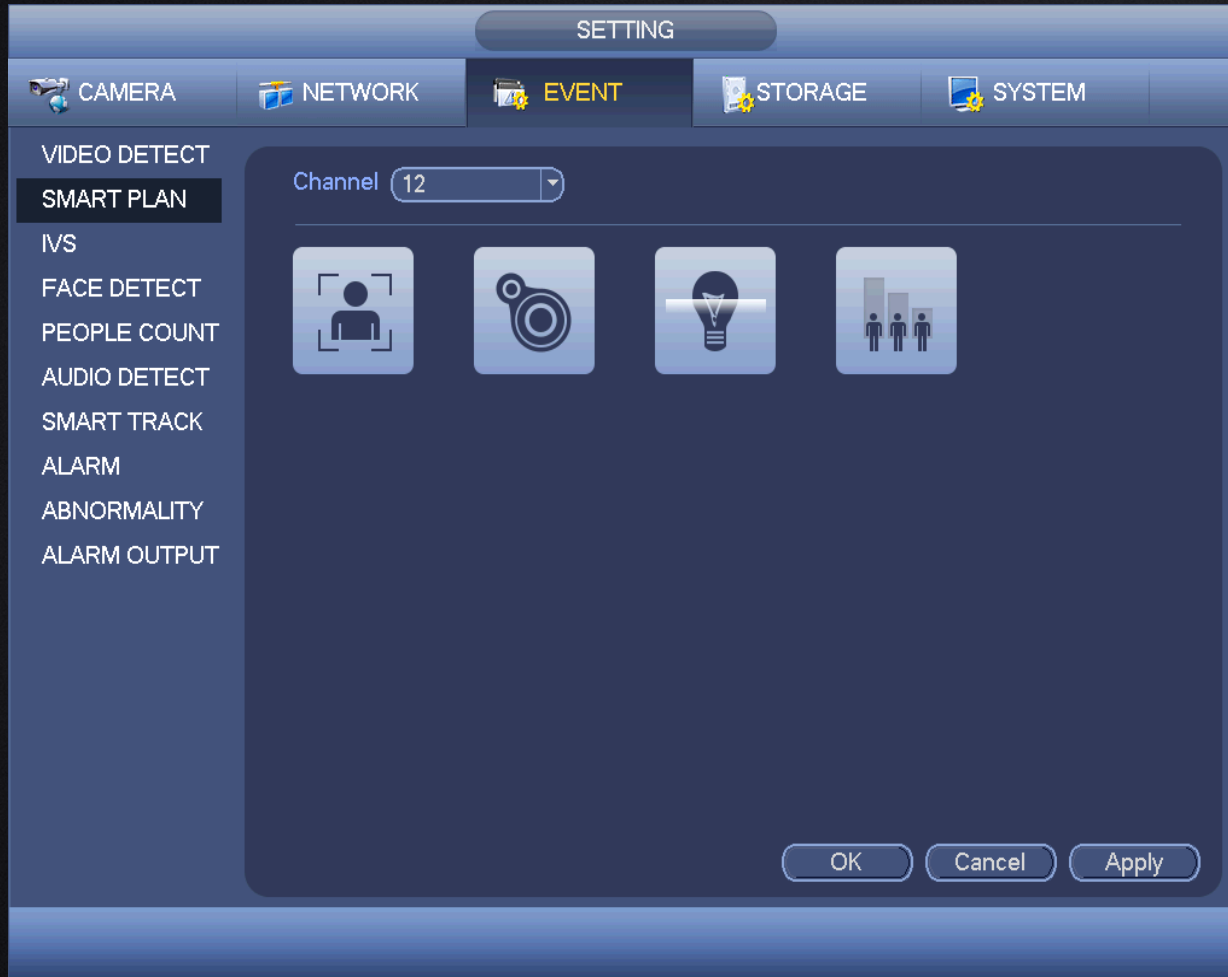


Intelligence Video System



Easy operation with friendly interface

Smart Plan-Bullet



You can plan the smart functions of the front-end at the channel you choose

Smart Plan-Ball



You can plan the smart functions at each preset of the front-end at the channel you choose.

Status

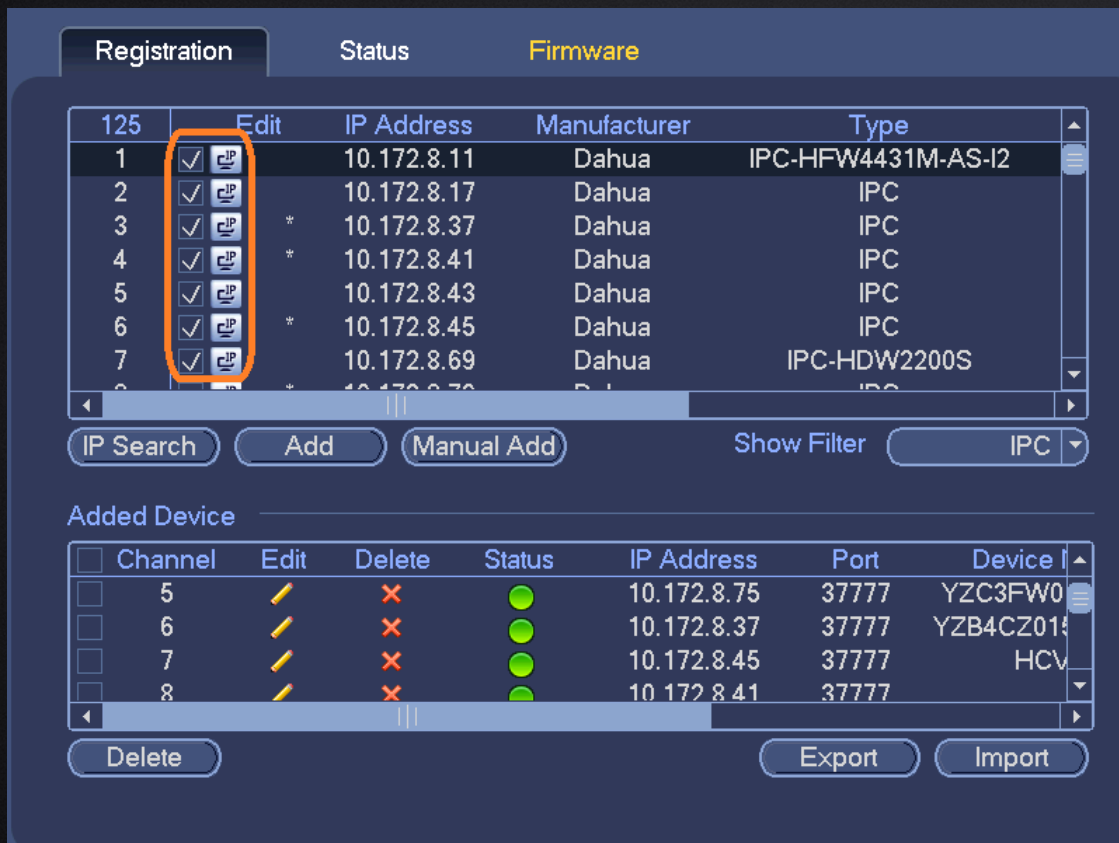
STATUS about fan, CPU and Power

You can Intuitive to see the status information of important equipment.



Batch Modify IP

Step 1:



The screenshot shows the 'Firmware' tab in the Dahua web interface. A table lists devices with columns for ID, Edit, IP Address, Manufacturer, and Type. The 'Edit' column for the first seven devices is highlighted with an orange box. Below the table are buttons for 'IP Search', 'Add', 'Manual Add', 'Show Filter', and a dropdown for 'IPC'. At the bottom, there is a section for 'Added Device' with a table of channels, status, IP addresses, ports, and device IDs. Buttons for 'Delete', 'Export', and 'Import' are also present.

	Edit	IP Address	Manufacturer	Type
125				
1	<input checked="" type="checkbox"/>	10.172.8.11	Dahua	IPC-HFW4431M-AS-I2
2	<input checked="" type="checkbox"/>	10.172.8.17	Dahua	IPC
3	<input checked="" type="checkbox"/>	10.172.8.37	Dahua	IPC
4	<input checked="" type="checkbox"/>	10.172.8.41	Dahua	IPC
5	<input checked="" type="checkbox"/>	10.172.8.43	Dahua	IPC
6	<input checked="" type="checkbox"/>	10.172.8.45	Dahua	IPC
7	<input checked="" type="checkbox"/>	10.172.8.69	Dahua	IPC-HDW2200S

Added Device

Channel	Edit	Delete	Status	IP Address	Port	Device ID
5	<input checked="" type="checkbox"/>	<input checked="" type="checkbox"/>	<input checked="" type="checkbox"/>	10.172.8.75	37777	YZC3FW0
6	<input checked="" type="checkbox"/>	<input checked="" type="checkbox"/>	<input checked="" type="checkbox"/>	10.172.8.37	37777	YZB4CZ015
7	<input checked="" type="checkbox"/>	<input checked="" type="checkbox"/>	<input checked="" type="checkbox"/>	10.172.8.45	37777	HCV
8	<input checked="" type="checkbox"/>	<input checked="" type="checkbox"/>	<input checked="" type="checkbox"/>	10.172.8.41	37777	

Step 2:



The screenshot shows the 'Modify IP' dialog box. It has a title bar 'Modify IP'. Inside, there are several fields: 'Batch Modify' (checked), 'Start Address' (10.172.8.11), 'Subnet Mask' (255.255.252.0), 'Default Gateway' (10.172.8.1), 'User Name' (admin), and 'Password' (empty). There are also 'Add' and 'Batch Modify' checkboxes. At the bottom are 'OK' and 'Cancel' buttons.

Modify IP

☒ Batch Modify

Start Address: 10.172.8.11

Subnet Mask: 255.255.252.0

Default Gateway: 10.172.8.1

User Name: admin

Password:

☒ Add

OK Cancel

| OUR SERVICES |



- 1.Strong technical support team
- 2.Quick response, each question no more than 24 hours
- 3.3 years warranty

THANK YOU!